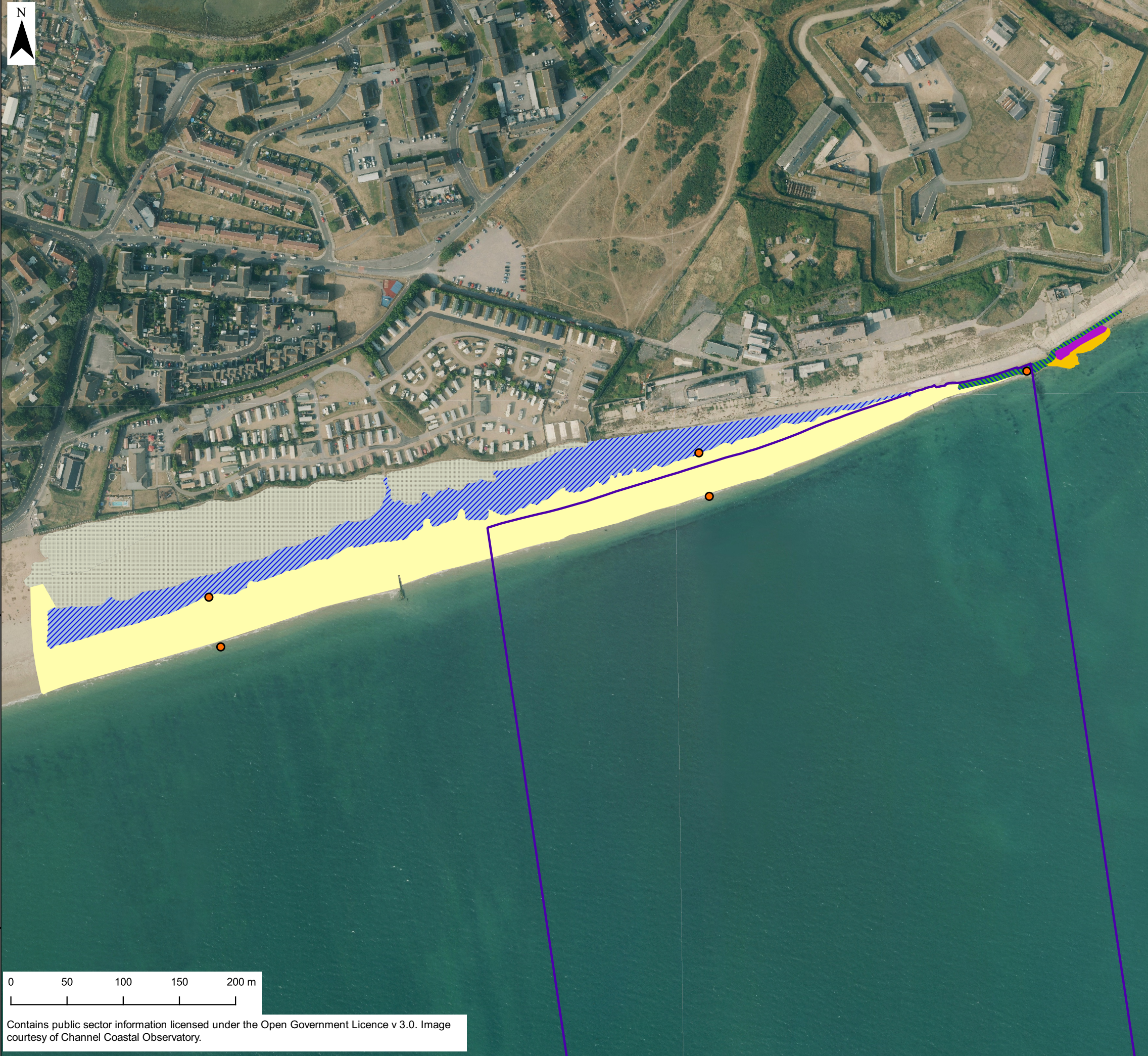


1°2.550'W

1°2.100'W



50°47.250'N

50°47.100'N

50°46.950'N

1°2.550'W

1°2.100'W

**AQUIND Interconnector**

▭ Marine Cable Corridor\*

● Soft sediment station

**Biotope**

▨ LR.LLR.FVS.FspiVS

▨ LR.FLR.Eph.EntPor

▨ LS.LCS

▨ LS.LSa.MoSa

▨ IR.MIR.KT.LsacT

▨ Vegetated shingle

\*Marine Cable Corridor clipped to MHWS

The Infrastructure Planning (Environmental Impact Assessment) Regulations 2017.

01	22/10/2019	AJ	FINAL ISSUE	SM	JL
REV	DATE	BY	DESCRIPTION	CHK	APP

DRAWING STATUS:

FINAL



The Natural Power Consultants Limited, The Green House  
Forrest Estate, Dalry, Castle Douglas, DG7 3XS, UK  
Tel: +44 (0)1644 430008 www.naturalpower.com

CLIENT:



PROJECT:

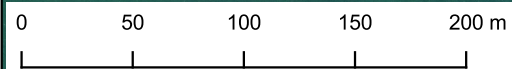
AQUIND Interconnector

TITLE:

Figure 8.4 Sediment Shore Station  
Locations and Habitats

SCALE AT A3: 1:3400	CHECKED: SM	APPROVED: JL
PROJECT NO: EN020022	DESIGNED: MG	DRAWN: GR
		DATE: 22/10/2019

DRAWING NO: EN020022 – ES – 8.4 GB201394_M_060_A	REV.NO. 01
--	---------------



Contains public sector information licensed under the Open Government Licence v 3.0. Image courtesy of Channel Coastal Observatory.

© WSP UK Ltd